

performances

MAGAZINE

THE  LD GLOBE

NOVEMBER – DECEMBER 2021

EBENEZER SCROOGES



Welcome to The Old Globe and this production of Ebenezer Scrooge's BIG San Diego Christmas Show. We thank you for being a crucial part of what we do, and supporting us through our extended intermission. Now more than ever, as we return to live performances, our goal is to serve all of San Diego and beyond through the art of theatre. Below are the mission and values that drive our work.

MISSION STATEMENT

The mission of The Old Globe is to preserve, strengthen, and advance American theatre by: creating theatrical experiences of the highest professional standards; producing and presenting works of exceptional merit, designed to reach current and future audiences; ensuring diversity and balance in programming; providing an environment for the growth and education of theatre professionals, audiences, and the community at large.

STATEMENT OF VALUES

The Old Globe believes that theatre matters. Our commitment is to make it matter to more people.

The values that shape this commitment are:

TRANSFORMATION

Theatre cultivates imagination and empathy, enriching our humanity and connecting us to each other by bringing us entertaining experiences, new ideas, and a wide range of stories told from many perspectives.

INCLUSION

The communities of San Diego, in their diversity and their commonality, are welcome and reflected at the Globe. Access for all to our stages and programs expands when we engage audiences in many ways and in many places.

EXCELLENCE

Our dedication to creating exceptional work demands a high standard of achievement in everything we do, on and off the stage.

STABILITY

Our priority every day is to steward a vital, nurturing, and financially secure institution that will thrive for generations.

IMPACT

Our prominence nationally and locally brings with it a responsibility to listen, collaborate, and act with integrity in order to serve.

The Old Globe has embarked on a series of steps to intensify and accelerate necessary change at all levels of our institution. Learn more about this work, including our Social Justice Roadmap, at www.TheOldGlobe.org/Roadmap.

The Theodor and Audrey Geisel Fund provides leadership support for The Old Globe's year-round activities.

BOARD OF DIRECTORS

Ann Davies[†]
CHAIR

Evelyn Olson Lamden[†]
INCOMING CHAIR

Paula Powers[†]
SECRETARY

Anthony S. Thornley[†]
TREASURER

DIRECTORS	Jennifer Greenfield	Jean Shekhter	HONORARY	EMERITUS
Jules Arthur	George C. Guerra [†]	Pamela Stafford	DIRECTORS	DIRECTORS
Terry Atkinson [†]	Dirk Harris	Karen Tanz	Mrs. Richard C. Adams*	Garet B. Clark
Stephanie R. Bulger, Ph.D. [†]	Nishma Held	Michael Taylor	Clair Burgener*	J. Dallas Clark*
Eleanor Y. Charlton	Susan Hoehn	Rhona Thompson	Mrs. John H. Fox*	Bea Epstein*
Nicole A. Clay [†]	Daphne H. Jameson	Christine Roberts	Audrey S. Geisel*	Sally Furay, R.S.C.J. **
Donald L. Cohn ^{†*}	Peter Landin	Trimble	Paul Harter*	Kathryn Hattox **
Ellise Coit	Sheila Lipinsky	Evelyn Mack Truitt	Gordon Luce*	Bernard Lipinsky*
Elaine Bennett	Keven Lippert	Debra Turner	Dolly Poet*	Delza Martin*
Darwin ^{†*}	Monica Medina	Pamela J. Wagner	Deborah Szekely	Conrad Prebys*
George S. Davis	Ryan K. Nelson	Reneé Wailes	Hon. Pete Wilson	Darlene Marcos Shiley
Mark Delfino [†]	Noelle Norton, Ph.D.	Lynne Wheeler		Patsy Shumway
Silvija Devine	David Jay Ohanian	Sheryl White ^{†*}		Carolyn Yorston- Wellcome
Pamela A. Farr [†]	Deirdra Price, Ph.D.	Margarita Wilkinson		Harvey P. White [°]
Robert Foxworth	Sandra Redman	Karin Winner [†]		
Harold W. Fuson Jr. ^{†*}	Sue Sanderson [†]	Vicki L. Zeiger ^{†*}		
	Karen L. Sedgwick [†]			

[†]Executive Committee member

[°]Past Chair

^{*}In memoriam

RESIDENT ARTISTS

Patricia McGregor	David Israel Reynoso	Delicia Turner Sonnenberg	James Vásquez
-------------------	----------------------	---------------------------	---------------

COMMISSIONED ARTISTS

Ngozi Anyanwu	Dea Hurston	Jonathan Mello	Delicia Turner Sonnenberg
Inda Craig-Galvan	Justin Levine	Tony Meneses	Miki Vale
Justin Emeka	Melinda Lopez	Liza Jessie Peterson	James Vásquez
Nathan Englander	Mona Mansour	Mansa Ra	Whitney White
Fiasco Theatre	Laura Marks	Heather Raffo	Craig Wright
José Cruz Gonzáles	Patricia McGregor	Steve Rosen and	Karen Zacarias
Jessica Hilt	Johanna McKeon	Gordon Greenberg	

ASSOCIATE ARTISTS

In recognition of their unique contribution to the growth of The Old Globe and their special talent, we take great pride and pleasure in acknowledging as Associate Artists the following individuals who have repeatedly demonstrated, by their active presence on our stages and in our shops, that wherever else they may work, they remain the heart and soul of the Globe.

William Anton	Ralph Funicello	John McLain	David F. Segal
Gregg Barnes	Lillian Garrett-Groag	Jonathan McMurtry*	Richard Seger*
Jacqueline Brookes*	Harry Groener	Stephen Metcalfe	Diane Sinor*
Lewis Brown*	A.R. Gurney*	Robert Morgan	Don Sparks
Victor Buono*	Joseph Hardy	Patrick Page	David Ogden Stiers*
Wayland Capwell*	Mark Harelik	Ellis Rabb*	Conrad Susa*
Kandis Chappell	Bob James	Steve Rankin	Deborah Taylor
Eric Christmas*	Charles Janasz	William Roesch	Irene Tedrow*
Patricia Conolly	Peggy Kellner*	Robin Pearson Rose	Sada Thompson*
George Deloy	Tom Lacy*	Marion Ross	Paxton Whitehead
Tim Donoghue	Diana Maddox	Steven Rubin	James Winker
Richard Easton*	Nicholas Martin*	Ken Ruta	Robert Wojewodski
Tovah Feldshuh	Dakin Matthews	Douglas W. Schmidt	G. Wood*
Monique Fowler	Deborah May	Seret Scott	
Robert Foxworth	Katherine McGrath*	Richard Seer	[*] In memoriam

FROM BARRY

Ebenezer Scrooge's BIG San Diego Christmas Show is, in a word, a hoot. It tells the familiar story of Charles Dickens's *A Christmas Carol*, with its Cratchit family and three time-spanning Spirits of Christmas, and its resonant cries of "Bah, humbug!" And in its fealty to Dickens, the show does all the things that we want from his great story. It asks us to think about our lives in this season of giving, and to ponder our connections, or their lack, to our families, our communities, and our own hearts. It reminds us of the frailty of human life, and of the indispensability of kindness, not only when December 25 comes around, but every day. So durable is Dickens's fable that even when artists who adapt it put their tongues firmly in their cheeks, the very architecture of the story itself, its deep, inner structure, touches us and proves most moving.

But Gordon Greenberg, Steve Rosen, and their cohort of fabulous designers and multitalented actors do indeed have their tongues pointed cheekward. And they bring to this eternal tale a sense of humor that's loopy and loony and loose. Gordon and Steve's great interpretive coup is to place Scrooge and Tiny Tim and all the rest right here in our own hometown, America's Finest City. Their simple conceit—that Ebenezer Scrooge saw California real estate at the turn of the 20th century as the place he'd make his fortune—sets the story on a trajectory that begins in giggles and ends on a note of inspired lunacy that brings Christmas past, present, and future right here to Balboa Park. And that's all I can say without spoilers!

I got to know this piece a few years ago when the Globe began a conversation with Gordon Greenberg that climaxed in his wonderful 2018 production of *The Heart of Rock & Roll*, the Huey Lewis songbook musical that set box office records here. But Gordon has maintained a writing career alongside his flourishing directing work. He sent me his Scrooge play, customized at that time for a small town in Pennsylvania, and that about did me in. When he proposed revising it for San Diego and told me how he and his brilliantly gifted partner Steve planned to make it work here, I said simply, "Let's do it." Its debut in 2019—the time pre-COVID-19 that seems like it might as well be another century—was a massive hit, and before it even finished its run, the Globe decided to bring it back and make it a regular part of our holiday season. The novel coronavirus scuttled that plan in 2020, so it's a very particular pleasure to see it on our stage now.

Bah, humbug? Not this time. Hip hooray is more like it.

Thanks for coming. Enjoy the show.



Barry Edelstein is the Erna Finci Viterbi Artistic Director of The Old Globe.
Any feedback on tonight's show or any of the Globe's work?
Email Barry at HiBarry@TheOldGlobe.org and he'll get back to you!

Barry Edelstein
ERNA FINCI VITERBI ARTISTIC DIRECTOR

Timothy J. Shields
AUDREY S. GEISEL MANAGING DIRECTOR

PRESENTS

EBENEZER SCROOGE'S BIG SAN DIEGO CHRISTMAS SHOW

BY

GORDON GREENBERG
AND STEVE ROSEN

Based on *A Christmas Carol* by Charles Dickens

Adam Koch
SCENIC DESIGN

David Israel Reynoso
COSTUME DESIGN

Amanda Zieve
LIGHTING DESIGN

Bart Fasbender
SOUND DESIGN

Orville Mendoza
MUSIC DIRECTOR

Tara Rubin Casting/
Merri Sugarman, CSA
and Kim Heil, CSA
CASTING

Anjee Nero
PRODUCTION STAGE MANAGER

DIRECTED BY

GORDON GREENBERG

Sheryl and Harvey White Theatre
Conrad Prebys Theatre Center

November 19 – December 26, 2021

CAST
(in alphabetical order)

FRED, YOUNG SCROOGE,
MEDIUM SCROOGE, TINY TIM, ETC. George Abud
EBENEZER SCROOGE Bill Buell
BOB CRATCHIT, JACOB MARLEY,
CHARLES, MR. FEZZI, ETC. Orville Mendoza
PRUDENCE SAINT, LAVINIA,
GHOST OF CHRISTMAS PRESENT, ARCHIBALD, ETC. Cathryn Wake
GERTRUDE SAINT, GHOST OF CHRISTMAS PAST,
MRS. CRATCHIT, JENNIE, ETC. Jacque Wilke

UNDERSTUDIESfor Bob Cratchit, Jacob Marley,
Charles, Mr. Fezzi, etc. – Henian Boone¹; for Ebenezer Scrooge – Brett Cassidy¹; for
Gertrude Saint, Ghost of Christmas Past, Mrs. Cratchit, Jennie, etc. – Jacqui Dupré¹; for
Prudence Saint, Lavinia, Ghost of Christmas Present, Archibald, etc. – Savannah Faye¹;
for Fred, Young Scrooge, Medium Scrooge, Tiny Tim, etc. – Komi M. Gbeblewou¹

Production Stage Manager Anjee Nero

SETTING
San Diego, California.

There will be no intermission.

PRODUCTION STAFF

Assistant Director Meg DeBoard
Associate Costume Design Charlotte Devaux
Assistant Lighting Design Caroline Andrew
Production Assistant Alexis Ellis-Alvarez
Stage Management Swing Kira Vine

The Actors and Stage Manager employed in this production are members of Actors' Equity Association,
the union of Professional Actors and Stage Managers in the United States.

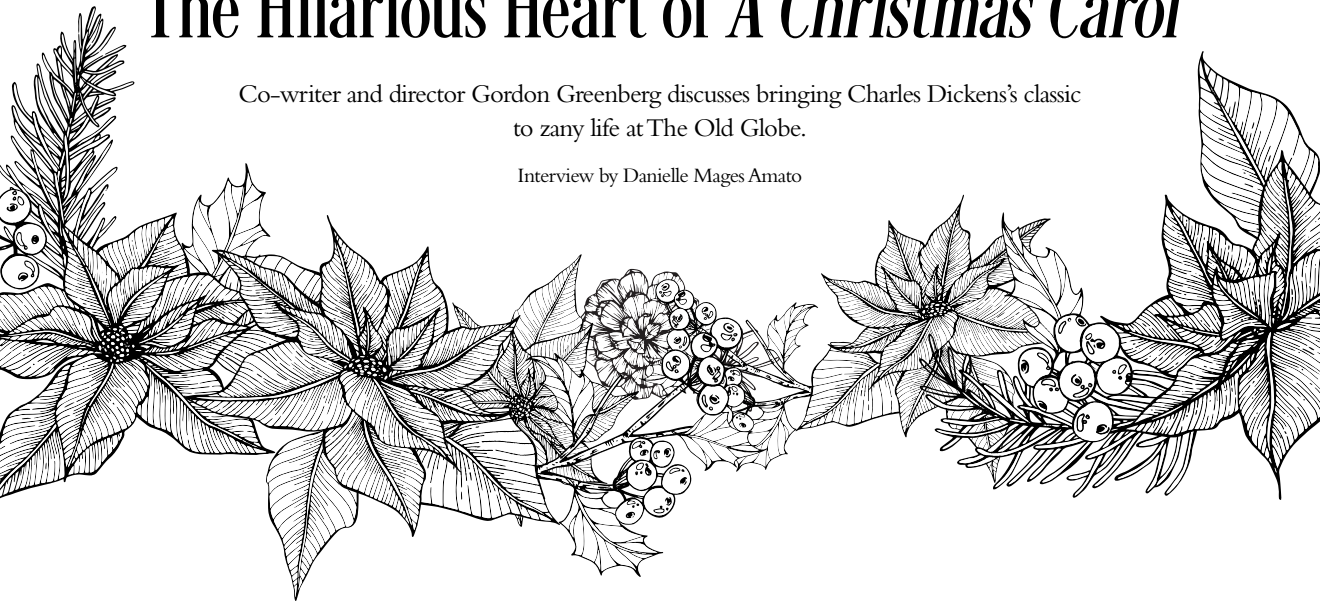
¹Student in The Old Globe and University of San Diego Shiley Graduate Theatre Program.

Si desea una sinopsis de esta obra en Español o en Inglés, favor de pedírsela al acomodador que le entregó este programa.
If you would like a synopsis of this production in English or Spanish, please request it from an usher.

The Hilarious Heart of *A Christmas Carol*

Co-writer and director Gordon Greenberg discusses bringing Charles Dickens's classic to zany life at The Old Globe.

Interview by Danielle Mages Amato



Co-writer and director Gordon Greenberg

What inspired you to tackle this adaptation? Has *A Christmas Carol* always had a particular meaning or resonance for you?

A Christmas Carol is one of the most enduring narratives in the world. I first discovered it via *Mister Magoo's Christmas Carol* when I was a kid, and I was engaged enough to dig into the original Dickens at the local library. (This was back in the stone ages, when we had to go to a library to find a book!) Though I was initially drawn to the ghost story, it was the core idea of repentance that made me a believer. This is a story about waking up, literally and figuratively.

It comforted me to think that anyone was capable of change, even bullies like Scrooge. Since then I have followed the many adaptations over the years with great interest. I even did a riff on it for Disney a few years back, called *Believe*, using their characters and music, and although it wasn't set at Christmas, the DNA of the story itself was very powerful. It is so well constructed that characters can be transposed into different contexts without sacrificing weight or relevance. In every iteration, from the original to *The Muppets*, it is the simple yet profound idea that we are all capable of change that fuels this great story.

What made you approach the adaptation in this way?

It takes a sturdy narrative to withstand the level of playful, abstract storytelling Steve Rosen and I love most: the anarchic story theatre

that the Royal Shakespeare Company made popular decades ago with *Nicholas Nickleby*, another Dickens novel. And since *A Christmas Carol* provides us with a similarly strong and clear spine, we knew this form of theatre would make a great match. Embracing the cast as storytellers, narrating as they slip in and out of specific roles, would remind the audience that they were watching an act of great daring, vulnerability, and creative spark, that this is theatre from the heart. That sense of spontaneity allows us to be as silly as we wish and still hold onto the humanity at the story's center.

What were the challenges of bringing the show to San Diego?

For starters, snow! There isn't much of it. Of course, we soon realized it was that very fact that would make for a terrific and rare event in the play: snow in San Diego! It happens, but not often. This would take place during one such winter. The next question was time period, since the original Dickensian Victorian era, which is full of so many delicious details, was still a nascent period for San Diego. Fast forward 20 years, though, and you are in the midst of one of the biggest growth periods in American history. We decided to make Scrooge a British émigré who moved to San Diego to seek his fortune in serving the financial needs of the Panama-California Exhibition. The rest unfolded from there, allowing us to set the entire play right here in Balboa Park and the surrounding communities, and then to skip back in time to Scrooge's childhood in Victorian England. We ended up with the best of both worlds, the new and the old.

What is unique about sitting in the seat of both adaptor and director at the same time?

Thankfully I have an amazing collaborator in Steve Rosen. Writing with Steve is an exercise in self-restraint. If we're not careful, we end up spending the day telling stories, playing word games, and making each other laugh. Come to think of it, that's basically what we do. But we funnel it all into the work. I suppose we trick ourselves into letting our imaginations flow freely, so as not to self-edit, and then somehow find the sense to organize it into a dramaturgical bento box that creates a narrative shape. (In the case of *Scrooge*, we had a great shape to start with.) As we dream up a script, I try to imagine the staging opportunities for our various flights of fancy. Frequently, the more implausible something seems, the more fun it will be to stage. We like to play with ideas like impossibly fast character and location changes, odd conveyances of information, music, magic, and character doubling, tripling, etc. But we always begin with the idea that drives the play. Why this story? Why these characters? Why now? In the case of *Scrooge*, it was and will always be redemption. And in this adaptation, the healing power of a shared theatrical experience. If it's an idea that is meaningful and rich to you, then it becomes a well you can access whenever you reach an impasse in the story or in a scene.

When it came to casting the show, what were you looking for in the performers?

This is a tough show to cast. The fewer actors you use, the more each one has to be able to do. We are asking a group of five actors to play over 50 roles, with varying dialects, temperaments, and even genders, in addition to singing, dancing, and playing musical instruments. Oh yeah, and they all have to be funny. And different from each other. And preferably with some connection to San Diego. What you are seeing on stage is the result of many months of casting, both in San Diego and New York. And this is a group of theatrical athletes; heroes, each and every one. I am in awe of what they do!

What did you feel the physical production, particularly sets and costumes, needed to achieve?

The toughest part of creating this sort of hyper-theatricalized work is boiling down your physical production to its essence. In other words, "essentializing." It's a deceptively rigorous and lengthy process. You know how when you pack at the last minute, you always pack too much? This is similar. It takes a lot of planning to essentialize what exactly we will need to tell the story in the most elegant, economical fashion. That applies to set pieces as well as costumes and sound. Every element needs to be carefully chosen and thought through, both for character and for pragmatism. It's a long process of spewing ideas and then vetting them one by one. Being concise is a lengthy affair! As the French philosopher Blaise Pascal said, "If I had more time, I would have written a shorter letter."

What new resonance do you feel the play has now, after the last 18 months of dealing with the pandemic?

Coming back to this piece in the wake of 18 months of isolation is especially poignant. We all now have a very personal understanding of what it means to be separated from our friends, families, and communities. Like Scrooge, we have lived through a drought of humanity and are suddenly privy to connection again. And it feels like nourishment. The idea that we're now sitting in a theatre together, in person, would have been unthinkable a year ago. Now, it is cause for celebration.

What kind of experience do you hope the audience has with this show?

Joyful! This is a show that celebrates family, community, and theatre itself. ■

THE GHOSTS OF *Christmas Carols* PAST

A Brief History of the Charles Dickens Classic and Its Many Adaptations

By Kristen Tregar

A Christmas Carol has come a long way since its 1843 debut as a novella. The story has been adapted hundreds of times for stage and screen, and those adaptations have ranged from the faithful to the satirical, the political to the musical, and from the heartwarming to the hilarious. Despite being more than 170 years old, the story of Ebenezer Scrooge's transition from miser to philanthropist retains its contemporary relevance and, as a result, the narrative has consistently proven to be a valuable source text. In some cases, these adaptations have stayed faithful to the original, while others have used the story as a starting point for parody, satire, or political commentary. Given just how many adaptations have been created, it would be impossible to describe them all, but several adaptations are particularly noteworthy.

Almost immediately after its publication, dramatic adaptations of *A Christmas Carol* began to spring up around London. This led to Edward Stirling's 1844 play, the only dramatic adaptation at the time officially sanctioned by Charles Dickens. Stirling was a well-known and respected director at the time who adapted a number of Dickens's novels for the stage. The work, a faithful representation of the novella, premiered in February 1844 at the Adelphi Theatre in London.

Several years later, Dickens himself performed a public reading of *A Christmas Carol* on December 27, 1852. This reading was his first of many public readings of his work, and when he performed a second reading three days later, he noted that the work had been well received by the working-class audience. He subsequently continued to edit and adapt the novella to be more suitable for a listening audience, and he included excerpts in his public readings until his death in 1870.

The screen debut of *A Christmas Carol* took place as a silent film directed by Walter R. Booth in 1901. Titled *Scrooge, or, Marley's Ghost*, the film was primarily based on a stage adaptation by J.C. Buckstone rather than on the novella itself. At the time, the film was considered particularly ambitious, as the entire story was condensed down to approximately six minutes and the special effects used for the ghosts were impressive for the period. This silent film was the first to use intertitles, facilitating the storytelling in such a short format. Sadly, much of the footage has been lost; only roughly three and a half minutes remain, preserved in the British Film Institute.

As the 20th century continued, a wide range of adaptations appeared, including animated versions such as *Bugs Bunny's Christmas Carol* and *Mickey's Christmas Carol*. As a result of these new tellings, some of the best-known actors in history have played Scrooge. Lionel Barrymore played the role for more than 20 years, beginning in 1934 when he joined Orson Welles for "The Campbell Playhouse" radio adaptation. Other historic Scrooges have included F. Murray Abraham, Patrick Stewart, Terrence Mann, Tony Randall, Tim Curry, and Kelsey Grammer.

There have also been many parodies, and many works that give a nod towards the Dickensian source text before heading in a very different direction. Many television shows have dedicated an episode to *A Christmas Carol* in some way, including "Sanford and Son," "Beavis and Butt-Head," "Family Ties," and "Epic Rap Battles of History." There have even been versions with Muppets (*The Muppet Christmas Carol*), animals (*An All Dogs Christmas Carol*), zombies (*I Am Scrooge: A Zombie Story for Christmas*), and Klingons (*A Klingon Christmas Carol*).

From novels to comic books, stage to screen, and Earthlings to aliens, *A Christmas Carol* has shown serious staying power and the ability to inspire and delight audiences in past, present, and future. ■

1844: Edward Stirling's production premieres in London.



1878: A pantomime adaptation called *The Miser* plays on a double bill with a production of *Humpty Dumpty's Dream*.

1860

1852: Charles Dickens's first public reading takes place in Birmingham.



1880

1901: Walter R. Booth's silent film adaptation premieres.

1900

1916: The first feature-length film adaptation, *The Right to Be Happy*, premieres, directed by and starring Rupert Julian.

1920

1921: *A Christmas Carol: Suite for Piano in Two Parts* premieres.

1938: MGM's film adaptation, starring Reginald Owen as Scrooge, is first shown.

1934: Lionel Barrymore and Orson Welles join forces for "The Campbell Playhouse" radio series.



1940



1960

1974: Guthrie Theater in Minneapolis, Minnesota premieres their stage version of the story, where it has played every season since.

1980

1970: *Scrooge*, a musical film starring Albert Finney as Scrooge and Alec Guinness as Marley's Ghost, premieres.

1979: *Bugs Bunny's Christmas Carol*, an animated adaptation starring Looney Tunes characters, first airs.

1983: The Walt Disney Company releases *Mickey's Christmas Carol*, an animated featurette.

1992: *The Muppet Christmas Carol*, featuring Jim Henson's Muppets, is released.

2000

1988: Patrick Stewart's one-man performance premieres in London, subsequently moving to Broadway.

2009: *I Am Scrooge: A Zombie Story for Christmas*, a post-apocalyptic novel adaptation by Adam Roberts, is published.

2007: *A Klingon Christmas Carol*, a stage adaptation set in the "Star Trek" universe on the Klingon homeworld of Qo'nos, premieres in St. Paul, Minnesota.

2011: *3 Ghosts*, a steampunk-inspired stage adaptation by PIPE DREAM theatre, premieres in New York.

2010: The Christmas special of "Doctor Who" features the Eleventh Doctor confronting a miserly man inspired by Scrooge.

**GEORGE ABUD**

(Fred, Young Scrooge, Medium Scrooge, Tiny Tim, etc.) Proud Arab American actor. Broadway: *The Band's Visit* starring Katrina Lenk and Tony Shalhoub (OBC recording, Daytime Emmy Award); *The Visit* starring Chita Rivera and Roger Rees (OBC recording). Off Broadway: Nerd Face in *Emojiland* (Drama Desk nomination for Outstanding Featured Actor, OBC recording); *The Resistible Rise of Arturo Ui* opposite Raúl Esparza, *Nathan the Wise* opposite F. Murray Abraham, *Peer Gynt*, *Allegro* directed by John Doyle (Classic Stage Company); *Lolita, My Love* (York). Regional: Lewis Chapman in *August Rush* (Paramount Theatre); *Annie Get Your Gun* directed by Sarna Lapine (Bay Street Theater); Puck in *A Midsummer Night's Dream* (Geva Theatre Center).

**BILL BUELL**

(Ebenezer Scrooge) The Old Globe: *Anna Christie*. Broadway: *Ink*, *Cyrano*, *Equus*, *History Boys*, *Inherit the Wind*, *Urinetown*, *42nd Street*, *Titanic*, *Tommy*, *Taking Steps*, *Big River*, *Annie*, *Once a Catholic*. Off Broadway: *Bad Habits*, *Rancho Viejo*, *Kin*, *On the Bum*, *Picasso at the Lapin Agile*, *The Common Pursuit*, *Tumacho*. Shakespeare in the Park: *Tartuffe*, *Winter's Tale*, *Twelfth Night*. Film/television: *Seven Seconds*, "Sneaky Pete," *God's Pocket*, *Across the Universe*, *Spy Game*, *Welcome to the Dollhouse*, *The Love Letter*, *Requiem for a Dream*, *Quiz Show*, *Palindromes*, *Kinsey*, "Boardwalk Empire," "30 Rock," "Blue Bloods," *John Adams*, "Curb Your Enthusiasm," "Law & Order."

**ORVILLE MENDOZA**

(Bob Cratchit, Jacob Marley, Charles, Mr. Fezzi, etc.) The Old Globe: *The Heart of Rock & Roll*, *Ebenezer Scrooge's BIG San Diego Christmas Show* (2019). Broadway: *Pacific Overtures*, *Peter and the Starcatcher*. Off Broadway: *Road Show*, *Romeo and Juliet*, *Timon of Athens* (The Public), *Passion*, *Pacific Overtures* (Classic Stage), *Found* (Atlantic), *Adrift in Macao* (Primary Stages; Drama Desk nomination). Regional: *Adrift in Macao* (Philadelphia Theatre Company; Barrymore Award), *Annie Get Your Gun* (Goodspeed, Bay Street), *Guys and Dolls* (Muny), *A Christmas Story*

(5th Avenue), *Side by Side* by *Sondheim* (Kansas City Rep). Television: "Billions," "The Blacklist," "Law & Order: Criminal Intent," *John Mulaney & the Sack Lunch Bunch*, "Marvelous Mrs. Maisel." orvillemendoza.com.

**CATHRYN WAKE**

(Prudence Saint, Lavinia, Ghost of Christmas Present, Archibald, etc.) The Old Globe: *Ebenezer Scrooge's...Christmas Show*. Broadway: *Natasha*, *Pierre & The Great Comet of 1812*. Off Broadway: *The Other Josh Cohen*, *The Fantasticks*, *The Hello Girls*. Select regional: *The Glass Menagerie* (Pittsburgh Public), *Conscience* (George Street Playhouse), *The Suffragist* (GBPAC), *Well-Intentioned White People* (Barrington Stage), *The Second Girl* (CATF), *Loch Ness* (The Rev), *The Seedbed* (New Jersey Rep), *Agent 355* (Chautauqua Theater Company). Television: "Madam Secretary," "Glee," "Unbreakable Kimmy Schmidt" (as featured vocalist), "The Today Show," "Good Morning America," "The 71st Annual Tony Awards." Cast albums: *The Great Comet*, *The Hello Girls*. Education: B.F.A. from Pace University, LAMDA. @CathrynWake.

**JACQUE WILKE**

(Gertrude Saint, Ghost of Christmas Past, Mrs. Cratchit, Jennie, etc.) The Old Globe: *Ebenezer Scrooge's BIG San Diego Christmas Show*. Regional: *Pride and Prejudice*, *Stupid F***ing Bird*, *The Importance of Being Earnest*, *Travesties*, *Mistakes Were Made* (Cygnet), *Yoke/The Car Plays* (La Jolla Playhouse), *Human Error*, *Moon Over Buffalo*, *The Father*, *Don't Dress for Dinner* (North Coast Rep), *The Happiest Place on Earth*, *Ballast*, *Next Fall*, *Fair Use*, *The New Century* (Diversionary), *Honky* (San Diego Rep). Honors: Charles Jehlenger Award, Craig Noel Award. Training: American Academy of Dramatic Arts. jacquewilke.com, @jaydubbers on Instagram.

GORDON GREENBERG

(Co-Writer, Director) The Old Globe: *Working*, *The Heart of Rock & Roll*. Broadway: *Holiday Inn* (as director/co-writer, Roundabout, Universal, PBS "Great Performances"), *Secret of My Success* (Universal). Off Broadway: *Dracula*, *A Comedy of Terrors* (upcoming), *Jacques Brel...* (Drama Desk, Drama League, Outer Critics noms), *Working*

(Drama Desk), *Single Girls Guide* (Ars Nova). London: *Guys and Dolls* starring Rebel Wilson (Savoy Theatre; six Olivier Award noms), *Barnum* (Menier Chocolate Factory). Toronto: *Piaf/Dietrich* (Mirvish; Dora Award), *Tangled* (Disney Theatrical). Regional: Williamstown, Huntington, Geffen, Paper Mill, Signature, Goodspeed, Chicago Shakes, MUNY, TheatreWorks Silicon Valley, Asolo, NY Stage and Film, Capital Rep, Bucks County, Chichester (UK). Television: original movies for Disney Channel, Nickelodeon. Education: Stanford, NYU Film, Royal Academy of Dramatic Art.

STEVE ROSEN

(Co-Writer) Selected co-writing/composing: *The Other Josh Cohen* (Soho Playhouse, NYC, Paper Mill Playhouse, NJ, Geva Theatre, NY, Westside Theatre, NYC), *The Secret of My Success* (Paramount Theatre, Chicago), *Dracula: A Comedy of Terrors* (Maltz Jupiter Theatre, Florida, Broadway Podcast Network), *Ebenezer Scrooge's BIG Playhouse Christmas Show* (Bucks County Playhouse, PA). Upcoming in 2022: *Broadway Vacation* (5th Avenue Theatre, Seattle), *Rolling Calls* (Broadway Podcast Network). Award nominations: six Drama Desk Awards, two Lucille Lortel Awards, a Off-Broadway Alliance Award, a Joseph Jefferson Award. Education: NYU/Tisch. @stevierosen on Instagram, Twitter.

ADAM KOCH

(Scenic Design) The Old Globe: *Ebenezer Scrooge's...Christmas Show*. International: *Dreamgirls* (Seoul, South Korea). U.S.: Off Broadway, Ford's Theatre, Goodspeed, Tuacahn Center for the Arts, Westport Country Playhouse, The Repertory Theatre of St. Louis, Paper Mill Playhouse, Baltimore Center Stage, Cincinnati Playhouse, Great Lakes Theater, Lyric Theatre of Oklahoma, Ogunquit Playhouse, Syracuse Stage, Music Theatre Wichita, Portland Stage. Awards: Suzi Bass Award for Outstanding Scenic Design for the immersive outdoor production of *Titanic* (Serenbe Playhouse), Helen Hayes Award nominations for *Kiss of the Spider Woman* (Signature Theatre), *Bat Boy* (First Stage). Education: Carnegie Mellon University. adamkochassociates.com, @instadamkoch on Instagram.

DAVID ISRAEL REYNOSO

(Costume Design) The Old Globe: *Hair*, *As You Like It*, *The Tempest*, *The Wanderers*, *Red Velvet*, *The Blameless*, *tokyo fish story*, *Constellations*, *Twelfth*

Night, Arms and the Man, *Water by the Spoonful*, *Time and the Conways*, *Double Indemnity*, *Be a Good Little Widow*. Other theatre: *Optika Piñata*, *Portaleza*, *Las Quinceañeras*, *Waking La Llorona* (as creator/director, Optika Moderna/La Jolla Playhouse), *Sleep No More* (Punchdrunk, NYC, Shanghai), ACT, ART, Arena, Finnish National Ballet, Portland Center Stage, WP, Seattle Rep, others. Further work: *Teatro Piñata* (New Children's Museum), *Hostile Terrain 94*, *PostSecret*, *Living with Animals* (SD Museum of Us). Obie Award, Creative Catalyst Grant recipient. davidreynoso.com, @designreynoso on Instagram.

AMANDA ZIEVE

(Lighting Design) The Old Globe: *Hair*, *Ebenezer Scrooge's BIG San Diego Christmas Show*, *Tiny Beautiful Things*, *Barefoot in the Park*, *Native Gardens*, *The Wanderers*, *Rich Girl*. Regional: *Put Your House in Order* (La Jolla Playhouse), *Rock of Ages* (Cygnet), *Sweeney Todd*, *Roof of the World* (KC Rep), *Billy Elliot: The Musical*, *Titanic* (Signature Theatre), *Approval Junkie* (Alliance Theatre). Associate design: *The Heart of Rock & Roll*, *Bright Star*, *Allegiance* (The Old Globe), *Escape to Margaritaville*, *Hollywood*, *The Hunchback of Notre Dame*, *Chasing the Song* (La Jolla Playhouse). amandazieve.com.

BART FASBENDER

(Sound Design) The Old Globe: *Baskerville: A Sherlock Holmes Mystery*, *The Rainmaker*. Broadway: *Bloody Bloody Andrew Jackson*. Off Broadway: *The Confession of Lily Dare* (Primary Stages), *Soft Power* (as sound effects designer, The Public Theater), *The Other Josh Cohen*, *Who's Holiday* (Westside Theatre), *Harry Clark* (Audible at Minetta Lane/Vineyard Theatre). Regional: KC Rep, Guthrie Theater, Idaho Shakespeare, Lake Tahoe, Great Lakes Theater, Cincinnati Playhouse in the Park, Bucks County Playhouse, Rep Theatre of St. Louis, Geva Theatre, ACT, Center Theatre Group, Philadelphia Theatre Co. Proud member USA 829 and Theatrical Sound Designers and Composers Association

TARA RUBIN CASTING

(Casting) The Old Globe: *Scrooge*, *Despereaux*, *Gods of Comedy*, *Life After*, *Heart of Rock & Roll*, *Much Ado*, *Tempest*, *Guys and Dolls*, *Othello*, *Two Gentlemen of Verona*, *Dog and Pony*, *Room with a View*, others. Broadway: *Six*, *Ain't Too Proud*, *King Kong*, *Band's Visit*, *Summer*, *Prince of Broadway*, *Bandstand*, *Indecent*, *Sunset Boulevard*, *Miss Saigon*, *Dear Evan Hansen*, *Bronx Tale*, *Cats*, *Falsettos*, *Disaster!*, *School*

of *Rock, Gigi, Bullets Over Broadway, Aladdin, Les Mis, The Heiress, How to Succeed...*, *Billy Elliot, Shrek, Young Frankenstein, Mary Poppins, Spamalot, Spelling Bee, The Producers, Mamma Mia!, Jersey Boys, Phantom*. Off Broadway: *Gloria: A Life, Smokey Joe's Cafe, Clueless, Here Lies Love, Love, Loss, and What I Wore*. Regional: McCarter, Yale, La Jolla, Paper Mill, Berkeley, others.

ANJEE NERO

(Production Stage Manager) The Old Globe: *The Gardens of Anuncia, Almost Famous, The Heart of Rock & Roll, Bright Star, Allegiance, Picasso at the Lapin Agile, Benny & Joon, October Sky, The Rocky Horror Show, Life After, The Wanderers, Ebenezer Scrooge's BIG San Diego Christmas Show (2019), Dog and Pony, The Twenty-Seventh Man, A Room with a View, Kingdom, The Tempest, The Winter's Tale, Be a Good Little Widow*. Broadway: *Bright Star*. Regional: *Fly, Sideways, Ruined, A Midsummer Night's Dream, Herringbone, The Seven* (La Jolla Playhouse), *Ruined* (Huntington Theatre Company, Berkeley Repertory Theatre), *Kiss Me, Kate* (Hartford Stage), *Venice* (Center Theatre Group, Kansas City Repertory Theatre), *Antigone* (SITI Company).



BARRY EDELSTEIN

(Erna Finci Viterbi Artistic Director) is a stage director, producer, author, and educator. He has directed nearly half of the Bard's plays. His Globe directing credits include *The Winter's Tale, Othello, The Twenty-seventh Man*, the world premiere of *Rain, Picasso at the Lapin Agile, Hamlet*, and the world premiere of *The Wanderers*. He also directed *All's Well That Ends Well* as the inaugural production of the Globe for All community tour. In January he oversaw the Globe's inaugural Classical Directing Fellowship program. He recently directed *The Tempest* with the Los Angeles Philharmonic at Walt Disney Concert Hall. As Director of the Shakespeare Initiative at The Public Theater (2008–2012), Edelstein oversaw all of the company's Shakespearean productions as well as its educational, community outreach, and artist-training programs. At The Public, he staged the world premiere of *The Twenty-seventh Man, Julius Caesar, The Merchant of Venice, Timon of Athens*, and Steve Martin's *WASP and Other Plays*. He was also Associate Producer of The Public's Broadway production of *The Merchant of Venice* starring Al Pacino. From 1998 to 2003 he was Artistic Director of Classic Stage Company. His book *Thinking*

Shakespeare, which was rereleased in a second edition in June, is the standard text on American Shakespearean acting. He is also the author of *Bardisms: Shakespeare for All Occasions*. He is a graduate of Tufts University and the University of Oxford, where he studied as a Rhodes Scholar.



TIMOTHY J. SHIELDS

(Audrey S. Geisel Managing Director) joined The Old Globe as Managing Director in 2017. In his time in San Diego, he has enjoyed becoming involved in the community. He currently serves as a board member of the San Diego Regional Chamber of Commerce's LEAD program; an advisory board member of the San Diego Downtown Partnership; and Vice President of the Balboa Park Cultural Partnership. He brings to San Diego many decades of not-for-profit theatre experience. He was Managing Director of Princeton, New Jersey's McCarter Theatre Center (2009–2017); Milwaukee Repertory Theater (1998–2009); and Geva Theatre Center in Rochester, New York (1992–1998). He has also held administrative positions at Children's Theatre Company in Minneapolis, Denver Center Theatre Company, and McCarter Theatre Center in an earlier period of his career. He served as President of the League of Resident Theatres and as Vice President of the board at Theatre Communications Group. He has been the Chair of the ArtPride NJ board; a member of Milwaukee's Latino Arts Board; and a board member of the Cultural Alliance of Greater Milwaukee. He holds a B.F.A. in Drama Production from Carnegie-Mellon University in his hometown of Pittsburgh, Pennsylvania.

CASTING

Tara Rubin Casting
Tara Rubin, CSA;
Merri Sugarman, CSA; Laura Schutzel, CSA;
Claire Burke, CSA; Peter Van Dam, CSA;
Felicia Rudolph, CSA; Xavier Rubiano, CSA; Kevin Metzger-Timson, CSA;
Louis DiPaolo; Spencer Gualdoni



This theatre operates under an agreement between the League of Resident Theatres and Actors' Equity Association, the union of professional actors and stage managers in the United States.



The Directors are members of the Society of Stage Directors and Choreographers, an independent national labor union.



This Theatre operates under an Agreement with the International Alliance of Theatrical Stage Employees Local No. 122.



The Scenic, Costume, Lighting and Sound Designers in LORT Theatres are represented by United Scenic Artists Local USA-826, IATSE.



The musicians are represented by the American Federation of Musicians, Local 325 San Diego.

COVID-19 MASK POLICY

Patrons attending performances in our two indoor theatres (the Old Globe Theatre and Sheryl and Harvey White Theatre) must wear masks while inside, regardless of vaccination or testing status. For more information about our COVID-19 safety policy, please visit www.TheOldGlobe.org/COVID-19.

PATRON INFORMATION

For more information about ticket policies and patron services, please visit www.TheOldGlobe.org.

TAKING PHOTOS IN THE THEATRE

Audience members may take photos in the theatre before and after the performance and during intermission. If you post photos on social media or elsewhere, you must credit the production's designers by including the names below.

Adam Koch, Scenic Design
www.adamkochassociates.com

David Israel Reynoso, Costume Design
@designreynoso

Amanda Zieve, Lighting Design
www.amandazieve.com

Bart Fasbender, Sound Design

Please note: Photos are strictly prohibited during the performance. Photos of the stage are not permitted if an actor is present. Video recording is not permitted at any time in the theatre.

LET'S ALL DO OUR PART!

We are proud that this program, as with all our programs year-round, is made with paper from wood in regrowth areas that are specially planted for use in the printing industry, making the process sustainable, renewable, and safe for our environment.

As you exit the theatre, feel free to leave your gently used program on the program stand for future audiences to use. Or you can put it in any of the recycle bins in the lobby or on our plaza.

Your Gift Matters!



Give by **December 31** and
The Conrad Prebys Foundation will **match** all
new and increased gifts **dollar for dollar!**

Visit **www.TheOldGlobe.org/Donate** or
text **GLOBE** to **243725** to make
your donation today!

THE  OLD GLOBE

The cast of *Hair*, 2021. Photo by Jim Cox.

Pivoting

DURING A PANDEMIC

BY KATHERINE HARROFF,
ASSOCIATE DIRECTOR OF
ARTS ENGAGEMENT



Teaching Artist Valeria Vega and Jesus Quintero at a Word Up! event, which pivoted from online to in-person in May 2021. Photo by Beto Soto.

On March 16, 2020, I was in Oregon with my colleague Laura for a potential project. We were returning to San Diego and received news that our stages would be shutting down. We sat wondering: what did this mean for our engagement work? How would we make theatre matter to more people when we couldn't set foot in the theatre or gather in person?

Instead of fearing the unknown, we asked ourselves how we could become friends with it. If we couldn't be together, how could we feel like we were together? It was imperative to continue uniting our communities through art. In the darkest moments, humanity needs creative outlets to process and express itself. We certainly could have waited—we could have held our breath and paused for the moment to come. We committed to rising to the challenges of the moment, as artists often have under dire circumstances, to hold a light in that darkness so people could communicate, create, and connect, even in the solitude of their homes. Our vision and values were augmented by taking care of three focal points: our community, our staff, and our organization.

We started developing online programming. It was some of the first in the country. A week after sitting sadly in the airport and hearing news of large audience gatherings shutting down across our country, I was learning new technology, sitting with a camera in my face, hosting live playwriting workshops for hundreds of people across the country. Amid a global pandemic, people needed an opportunity to immerse themselves in creative arts.

You can find all of the Arts Engagement Department's great work on The Old Globe's YouTube channel. In-person workshops were reconceived, revamped, and presented online for everyone to utilize. Opportunities like The Living Room Play Workshops and festival were highly successful. The resounding response we got from participants was that they mattered.

We learned that digital artmaking helps address accessibility; we found that the ability to assemble safely online serves as a functional space for people who have difficulty leaving their homes. A year after successfully building a community online, questions shifted to: how can we once again create a safely constructed road back to the world of live artmaking? How can we make sure we are all safe but still have access to the vital resources of creative expression? These questions allowed us to pivot toward a hybrid solution.

AXIS programming came in to support the transition. For the past six years, we have produced free community programming on our plaza. When the rules of lockdown shifted, we utilized the desire of the San Diego community to be out of their houses and to gather safely to build our next steps in uniting. In May of 2021, we invited our first audience back to the Globe. Weekly, audiences recreated themselves on our plaza, enjoying free live shows and participating in artmaking opportunities. We were safely able to connect with over 10,000 live audience members.

Many people came up to me throughout these programs thanking us for giving them their "first opportunity to enjoy a live show again." I saw friends reunite for the first time in a year, and artists shake off the sadness of 2020 on our stage and reignite their passions. It was magic, and we are thankful for the space and the support we garnered in these big moments of experimentation.

The past two years have shown us to expect the unexpected. As the world changes, we will change with it. As long as you keep coming, the Globe will be here making theatre matter. ■

PRODUCTION SPONSORS



GEORGE C. GUERRA



DEE E. SILVER, M.D.

THE CONRAD PREBYS FOUNDATION

ANONYMOUS

ARTIST SPONSORS

FOR BILL BUELL (EBENEZER SCROOGE)
DR. STEVE AND LYNNE WHEELER

The Old Globe is deeply grateful to our Artistic Angels and Benefactors, whose vital support of the Annual Fund helps us make theatre matter to more people. For additional information on how to support the Globe at these extraordinary levels, please contact Llewellyn Crain at (619) 684-4141 or lcrain@TheOldGlobe.org.

Artistic Angels (\$200,000 and higher annually)



TERRY ATKINSON AND KATHY TAYLOR



KAREN AND DONALD COHN†



ELAINE AND DAVE DARWIN



PAULA AND BRIAN POWERS



JEAN AND GARY SHEKHTER



DARLENE MARCOS SHILEY†
In memory of Donald Shiley



THE THEODOR AND AUDREY GEISEL FUND



THE ERNA FINCI VITERBI ARTISTIC DIRECTOR FUND
In memory of Erna Finci Viterbi

BENTIVOGLIO FAMILY FUND

THE ESTATE OF JEFFREY E. WHITE

THE CONRAD PREBYS FOUNDATION



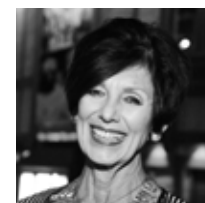
The James Irvine Foundation

SHUBERT FOUNDATION INC.

Benefactors (\$100,000 to \$199,999)



DIANE AND JOHN BEROL



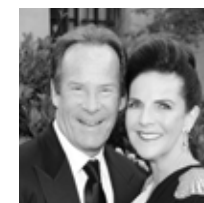
ANN DAVIES



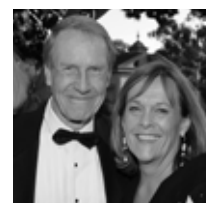
PAMELA FARR AND BUFORD ALEXANDER



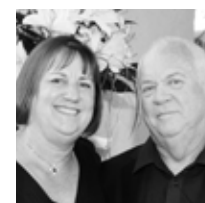
HAL AND PAM FUSON



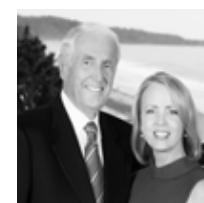
KAREN AND STUART TANZ



GILLIAN AND TONY THORNLEY



PAMELA J. WAGNER AND HANS TEGEBO



SHERYL AND HARVEY WHITE FOUNDATION



VICKI AND CARL ZEIGER

THE ESTATE OF RICHARD FORD

PRICE PHILANTHROPIES

View the Globe's government supporters on page 18 and corporate supporters on page 19.

†Charter Sponsor since 1995

Photo for Diane and John Berol: Robert Sean Leonard, *King Richard II*, 2017. Photo by Jim Cox.

EXTRAORDINARY LEADERSHIP

Since the founding of The Old Globe in 1935, heroic leadership has made the theatre a cultural icon in San Diego and a leader in the American theatre. The following individuals and organizations, recognized for their tremendous cumulative giving, comprise a special group of friends who have played leading “behind-the-scenes” roles, helping to create productions on our three stages and our programs in the community.

— \$25 million and higher —
The Theodor and
Audrey Geisel Fund
Donald* and Darlene Shiley

— \$3 million and higher —
David C. Copley Foundation
County of San Diego

Joan and Irwin Jacobs
The Kresge Foundation
The Lipinsky Family
Estate of Beatrice Lynds*

— \$11 million and higher —
Conrad Prebys*
City of San Diego Commission for
Arts and Culture

— \$1 million and higher —
Mary Beth Adderley
Bank of America
Bentivoglio Family Fund
Diane and John Berol
Stephen and Mary Birch

National Endowment
for the Arts
Victor H.* and Jane Ottenstein
Qualcomm
Paula and Brian Powers
Price Philanthropies Foundation

— \$9 million and higher —
Karen and Donald Cohn

Foundation, Inc.
California Cultural
& Historical Endowment
J. Dallas and Mary Clark*

Estate of Dorothy S. Prough*
Jeannie and Arthur Rivkin
Jean and Gary Shekhter
Karen and Stuart Tanz
Theatre Forward

— \$8 million and higher —
Sheryl and Harvey White

Joseph Cohen and Martha Farish
Peter Cooper and Erik Matwijkow
Valerie and Harry Cooper
Elaine and Dave Darwin
Ann Davies

Gillian and Tony Thornley
Wells Fargo
Carolyn Yorston-Wellcome
Vicki and Carl Zeiger
Anonymous (1)

— \$7 million and higher —
Kathryn Hattox*
Viterbi Family and The Erna Finci
Viterbi Artistic Director Fund

Una Davis and Jack McGrory
Silvija and Brian Devine
Helen Edison*

*In memoriam

— \$4 million and higher —
The James Irvine Foundation
The Shubert Foundation

Pamela Farr and Buford Alexander
Globe Guilders

PUBLIC SUPPORT



The California Office of the Small Business Advocate

Financial support is provided by The City of San Diego.

We thank all our generous patrons and supporters—including government funders—who help make theatre matter to more people and who have sustained us throughout this challenging time.

THEATRE FORWARD

Theatre Forward advances the American theatre and its communities by providing funding and other resources to the country's leading nonprofit theatres. A full list of funders that support Theatre Forward's contributions to The Old Globe can be found at TheOldGlobe.org/Theatre-Forward.

CORPORATE DONORS

Artistic Angels
(\$200,000 and higher annually)



Benefactors
(\$100,000 to \$199,999)



Ovation Circle
(\$60,000 to \$99,999)



Producer Circle (\$30,000 to \$59,999)



Artist Circle (\$25,000 to \$29,999)



Director Circle (\$10,000 to \$24,999)



Founder Circle (\$5,000 to \$9,999)

Edward Jones
MG Properties Group
Modern Times
Morgan Stanley
Nordson Corporation
Foundation

NWB Imaging, LLC
Procopio, Cory,
Hargreaves & Savitch LLP
RAHD Group
West CPM, Inc.

Craig Noel Circle (\$3,000 to \$4,999)

RKG Wealth Management
TravelStruck

Champions (\$1,000 to \$2,999)

Chicago Title
Company

Higgs Fletcher
& Mack, LLP

La Jolla Kiwanis
Foundation

Louis Vuitton

Anonymous (1)

The Old Globe invites your company to become a Corporate Partner and make theatre matter to more people while receiving exclusive benefits. Contact Kristina Keeler at (619) 684-4140 or kkeeler@TheOldGlobe.org.

ANNUAL FUND DONORS

In order to make theatre matter in the lives of more people, The Old Globe—a not-for-profit theatre—relies on the support of our community. We thank our Circle Patrons and Friends of The Old Globe members for these generous annual fund gifts that help us deliver great theatre and life-changing arts engagement programs.

Artistic Angels (\$200,000 and higher annually)

Terry Atkinson and Kathy TaylorΔ Bentivoglio Family FundΔ California Department of Corrections and Rehabilitation	The City of San Diego Commission for Arts and Culture Karen and Donald Cohn ♥ Elaine and Dave Darwin Entravision HM Electronics, Inc.	The James Irvine Foundation Paula and Brian Powers ♥ The Conrad Prebys Foundation Jean and Gary Shekhter ♥ Darlene Marcos Shiley, in memory of Donald ShileyΔ The Shubert Foundation	The Theodor and Audrey Geisel Fund The Erna Finci Viterbi Artistic Director Fund ♥ The Estate of Jeffrey E. White Anonymous (2)
--	---	--	--

Benefactors (\$100,000 to \$199,999)

Diane and John BeroldΔ Ann Davies ♥ Δ Pamela Farr and Buford Alexander ♥Δ In memory of Annette and Dick Ford	Hal and Pam Fuson ♥Δ Joan and Irwin Jacobs Fund of the Jewish Community Foundation Price Philanthropies Foundation	Qualcomm Karen and Stuart Tanz ♥ Gillian and Tony Thornley Pamela J. Wagner and Hans TegeboΔ	Sheryl and Harvey White FoundationΔ Vicki and Carl Zeiger ♥ Anonymous (2)
---	---	--	--

Ovation Circle (\$60,000 to \$99,999)

California Arts Council, A State Agency Nikki and Ben Clay ♥Δ The Joseph Cohen and Martha Farish New Play Development Fund	Mr. and Mrs. Brian K. Devine ♥Δ Hervey Family Non- Endowment Fund at The San Diego FoundationΔ	Laurents / Hatcher FoundationΔ Sahm Family FoundationΔ Sue and Edward “Duff” SandersonΔ	The Shen Family FoundationΔ Theatre Forward United
---	--	---	--

Producer Circle (\$30,000 to \$59,999)

Jules and Michele Arthur ♥ The Belenzon Family in memory of Irvin and Ruth BelenzonΔ The Binford FamilyΔ Ric and Eleanor Charlton Ellise and Michael CoitΔ Peter Cooper and Erik Matwijkow Elizabeth CushmanΔ	Nina and Robert Doede Globe Guilders Richard and Jennifer GreenfieldΔ George C. GuerraΔ Daphne H. and James D. JamesonΔ Jeffrey and Sheila Lipinsky Family Foundation The Lodge at Torrey Pines	The Parker Foundation (Gerald and Inez Grant Parker) Sempra Dee E. Silver, M.D. Subaru of El Cajon Evelyn Mack Truitt U.S. Bank Viasat Jordine Skoff Von Wantoch* Reneé and Bob WailesΔ	Wilkinson Family Charitable Fund Brent Woods and Laurie Mitchell June E. Yoder FamilyΔ Anonymous (2)Δ
--	--	--	--

Artist Circle (\$25,000 to \$29,999)

California Bank & Trust California’s Office of the Small Business Advocate City National Bank Una Davis and Jack McGrory Don and Barbara FosterΔ	Estate of Marilyn Rogers Kneeland The Blanche and Irving Laurie Foundation Sandy and Arthur* Levinson Peggy and Robert Matthews Foundation	Patrons of the Prado Irwin and Maryanne Pfister The Sapp Family Fund at the Rancho Santa Fe FoundationΔ Muffy Walker	Mandell Weiss Charitable Trust The Wickline FamilyΔ Karin Winner Anonymous (1)
---	--	---	--

Director Circle (\$10,000 to \$24,999)

Maggie Acosta and Larry ShushanΔ Alicia and Jonathan AtunΔ Jan and Rich Baldwin Bank of America Joan and Jeremy Berg The Bjorg Family The Browar Family Fund of the Jewish Community Foundation Dee Anne and Michael Canepa Alice and YT Chen, The Chenzyme Foundation Carlo and Nadine Daleo George Davis ♥ Marguerite Jackson Dill, in memory of George Dill ♥Δ Edgerton Foundation Barbara and Dick* Enberg Dan and Phyllis EpsteinΔ Estate of Dr. and Mrs. Robert Epsten Carol Spielman-Ewan and Joel EwanΔ Susanna and Michael Flaster	Elaine Galinson and Herb Soloman and the Joseph and Beverly Glickman Fund of the Jewish Community Foundation Cam and Wanda Garner Drs. Tom and Jane GawronskiΔ Carol L. Githens Kimberly Godwin Deborah A. and David A. Hawkins Nishma and John Held ♥ Teresa and Harry Hixson, Jr.Δ Susan and Bill Hoehn Sally and John Hood HoyleCohen, LLC Gail and Doug Hutcheson Deni Jacobs and James Hammermesister Hal and Debby Jacobs Jerri-Ann and Gary Jacobs Robert Kilian, in memory of Kathleen M. Slayton Jo Ann KiltyΔ Brooke and Dan Koehler	Bill and Linda Kolb ♥Δ Bob* and Laura Kyle ♥ Dr. William and Evelyn LamdenΔ Peter and Michelle Landin Carol Ann and George W. LattimerΔ Benjamin and Kimberly LeeΔ Pamela Hamilton Lester in memory of Jim LesterΔ Marshall LittmanΔ Marsh & McLennan Agency Estate of Madelon McGowan Don and Judy McMorrow ♥ Judith MorganΔ National Endowment for the Arts Neiman Marcus San Diego Caroline and Nicolas Nierenberg Polly and Greg Noel Nordstrom The Kenneth T. and Eileen L. Norris Foundation Jerry and Phyllis OlefskyΔ David and Mary Ann PetreeΔ	Tom and Lisa Pierce Peggy and Peter Preuss Random House Children’s Books ResMed Foundation Amy Roth Ivor and Colette Carson Roysten Fund Stan SiegelΔ The Harold and Mimi Steinberg Charitable Trust Phillip and Gayle TauberΔ Rhona Thompson University of San Diego The Kurt Weill Foundation For Music Wells Fargo Dr. Steve and Lynne Wheeler James E. and Kathryn A. Whistler Fund at The San Diego Foundation AC and Dorothy WoodΔ Anonymous (3)Δ
---	---	---	---

Founder Circle (\$5,000 to \$9,999)

Lisa and Steve Altman • Karen and Jim Austin • David A. and Jill Wien BadgerΔ • Toni and Deron Bear • Marian Benassi • Robert Blanton and Ann ClarkΔ • Arthur and Barbara Bloom Foundation • Elizabeth and Steven Bluhm • Dr. Herman and Irene Boschken • Bea and Bill BriggsΔ • Robert and Pamela Brooks • Glenn and Jolie BuberΔ • Harry and Sandra Carter • Greg and Loretta Cass • Carol and Jeff ChangΔ • Cliff and Carolyn ColwellΔ • Bryan Crail and Tim Reed • Frederik and Irene Defesche • Chuck and Odette EbersoleΔ • Edward Jones Financial Advisor, David S. Tam • Marion Eggertsen • Estate of Elizabeth Walker • Jessica Farr • William and Eva Fox Foundation (administered by Theatre Communications Group) • Michael and Rocio Flynn • Bill and Judy Garrett • Arthur Getis and Roberta KingΔ • Dean J. HaasΔ • The Estate of Betsy Hamblin • Norm Hapke and Valerie Jacobs HapkeΔ • Estate of Virginia L. Higgins-Hawkins • David Hitz • Thao and Jeff Hughes • Dea and Osborn Hurston • Drs. Sonia and Andy* IsraelΔ • David K. JordanΔ • Kerr Family Foundation • Webster B. and Helen W. KinnaidΔ • Curt and Nancy KochΔ • Regina Kurtz, in loving memory of Al Isenberg • Jean* and David Laing ♥Δ • Ronald and Ruth W. LeonardiΔ • Paul Levin and Joanna HirstΔ • Marcia A. MattsonΔ • Nevins and Margret McBride • Elizabeth and Edward McIntyreΔ • Thomas and Randi McKenzieΔ • Paul and Maggie Meyer • MG Properties Group • Dr. Howard and Barbara Milstein • Modern Times Beer • Rebecca Moores • Morgan Stanley • Darrell Netherton and Robert WheelerΔ • Nordson Corporation Foundation • NWB Imaging, LLC • Michael and Christine PackΔ • Susan ParkerΔ • Bernard Paul and Maria Sardina • Barbara PetersenΔ • Christopher and Angela Peto • Gale and James Petrie • John and Marcia Price Family Foundation • Procopio, Cory, Hargreaves & Savitch LLPΔ • Joan and Richard QuallsΔ • RAHD Group • Linda Rankin and Rodney WhitlowΔ • Ann and Tim Rice • Rivkin Family Fund I at The San Diego Foundation • Nancy J. RobertsonΔ • Robert RosenbergΔ • Warren* and Beverly Sanborn ♥ • Robert and Lisa ShawΔ • Lari SheehanΔ • Dave and Phyllis Snyder • Peter and Frances Splinter • Kathleen and Al Steele ♥Δ • Ms. Jeanette StevensΔ • Sycuan Band of the Kumeyaay Nation • Deborah Szekely • Brenda and Robert Tomaras • Greta and Stephen Treadgold • C. Anne Turhollow and Michael J. Perkins*Δ • Stanley and Anita Ulrich • Carol Vassiliadis • Carol and Larry Veit • The Vincent FamilyΔ • Lian von Wantoch • John and Marcia Price Family Foundation • Procopio, Cory, Hargreaves & Savitch LLPΔ • Wendy Waterman • Sue and Bill Weber • Chris and Pat Weil • Shirli Weiss and Sons • West CPM, Inc. • Chester Yamaga and Jean Samuels ♥ • Britt ZellerΔ • Diane and Robert Zeps • Emma and Leo Zuckerman • Tatiana Zunshine and Miles GrantΔ • Anonymous (5)Δ

Craig Noel Circle (\$3,000 to \$4,999)

Mr. and Mrs. David C. Ailor ♥ • Drs. Gabriela and Michael Antos • Judith Bachner and Eric Lasley ♥Δ • Bobbie Ball • Diana (DJ) Barliant and Nowell Wisch Endowment Fund of the Jewish Community Foundation • Jan Bart • Biffar Family • M. Joan Bishop, in memory of Harold O. McNeil, Esq. ♥ • Pat and Carol Bivens • Gary and Barbara Blake • Barbara Bolt • Rebecca Blakely Brown • Dr. Stephanie BulgerΔ • Anita Busquets and William Ladd • Peter and Joan Camana • Edward and Pamela Carnot ♥ • George* and Ellen Casey • Doris and Wayne Christopher • Jan and Tom CiaraffoΔ • Garet and Wendy Clark ♥ • Ms. Heidi Conlan/The Sahana Daywi Foundation • Richard and Stephanie CouttsΔ • Jane CowgillΔ • Gigi Cramer, in memory of Ed Cramer • Ronald D. Culbertson • Darlene G. Davies,

Craig Noel Circle (\$3,000 to \$4,999) (continued)

in memory of Lowell Davies • Angie DeCaro ♥ • Jim and Sally Ditto • Douglas Druley and Judee SedlerΔ • Berit and Tom Durler • Virginia and Chris Eddy • Hilit and Barry Edelstein • Bill Eiffert and Leslie Hodge • Arlene Esgate • Dieter Fischer/Dieter's Mercedes Service Inc. • Christopher Menkov and Jennifer Fisher in Memory of Elizabeth Meyer • Dr. Ben and Susan Frisberg • Joyce Gattas • Teresa George ♥ • Jarrod Gerardot and Joel Pasion • Wendy Gillespie • Fred and Lisa GoldbergΔ • Cathryn Golden ♥Δ • Edry GootΔ • Charles Gyselbrecht and Eric Taylor • Thomas and Cristina Hahn ♥Δ • Ms. Cheryl Haimsohn • Julia Carrington HallΔ • Pat and Rick Harmetz • Gordon and Phyllis Harris • Patrick Harrison and Eleanor Lynch ♥Δ • Richard and Linda Hascup • Bill and Nancy Homeyer ♥ • Gary and Carrie Huckell • The Jasada Foundation • Johnson Family Foundation • Jerry* and Marge KatlemanΔ • Edythe Kenton • Ken and Sheryl KingΔ • John Kirby and Anthony Toia • Jane and Ray* Kloforn ♥ • Drs. Janice and Matt KurthΔ • James and Janice LaGrone ♥ • Veronica and Miguel Leff • Terry and Mary Lehr • The Leist Family ♥ • Jeffrey and Hillary Liber Fund of the Jewish Community Foundation • Robin J. Lipman ♥ • Neal and Heike MaglaqueΔ • Sally and Luis MaizelΔ • Jackie and Charlie Mann Fund of the Jewish Community Foundation • Dr. Ted and Marcy MazerΔ • Oliver McElroy and Karen DeLaurier • Dr.* and Mrs. M. Joseph McGreevy • Diane McKernan and Steve LymanΔ • Judi Menzel ♥ • Dean and Sue Mills • Charles and Ilene MittmanΔ • Akiko Charlene Morimoto and Hubert Frank Hamilton, Jr.Δ • Nancy and James Mullen • Geri Musser • Elspeth and Jim Myer • Joyce NashΔ • Mark C. Niblack, M.D. ♥ • Mr. and Mrs. Thomas C. PastoreΔ • L. Robert and Patricia Payne • Anita PittmanΔ • Col.* and Mrs. Ben Pollard • Dr. Daniel Porte, Jr. and Mrs. Sally DuBois • Dr. Julie A. Prazich and Dr. Sara Rosenthal • Ranch & Coast Magazine • Joseph and Sara Reisman Fund of the Jewish Community Foundation • RKG Wealth Management • Christine RounsavellΔ • Dawn and Phil RudolphΔ • Julie and Jay Sarno • Jackie Schoell • In memory of Axel • Richard Shapiro and Marsha Janger • Timothy J. Shields • Drs. Joseph and Gloria Shurman • Mark and Katherine Silver • Alan and Esther Siman • Nancy and Alan Spector and FamilyΔ • Nancy Steinhart and Rebecca Goodpasture ♥ • Bob* and Mike StiversΔ • Louise and Jack Strecker ♥ • Bill and Diane StumphΔ • Karen and Don Tartre ♥Δ • Tim and Judy Tillyer • Doris Trauner and Richard StanfordΔ • TravelStruck • Suzanne Poet Turner and Michael T. Turner ♥ • Susan and Larry Twomey ♥Δ • Peggy Ann Wallace • Judith WenkerΔ • Charlie Zieky and Bob Berman • Anonymous (10)Δ ♥

Champion (\$1,000 to \$2,999)

Dede AlpertΔ • Diana and Don Ambrose • In loving memory of Stanley E. Anderson • Mrs. Cyla Andrus and Mr. Darrell MeadΔ • Jeff and Donna ApplesteinΔ • Helen AshleyΔ • Toni Atkins and Jennifer LeSar • Katherine AustinΔ • Helene Beck • Nell Benjamin and Laurence O'KeefeΔ • Sondra and Robert Berk Fund of the Jewish Community Foundation • Sally and John Berry • Mary Ann BeysterΔ • Norma and Craig Blakey • Rich and Beth Brenner • Alyssa BrzenskiΔ • John Burns and Dr. CC CameronΔ • Robert Caplan and Carol Randolph • Cappetta Family Foundation • Chicago Title Company • Janet and Maarten Chrispeels • Richard Clampitt and Rachel Hurst • Katharine K. Cline and Michael A. Lee • Marge ColeΔ • Pamela Cooper • Leslie and Deborah Cross • Drs. Charles Davis and Kathryn HollenbachΔ • John and Barbara EdgingtonΔ • James and Ann Marie Elliff • Arthur EngelΔ • Walt FidlerΔ • Forsyth Leonard Fund of the Rancho San Diego Foundation • Jean and Sid* Fox • Cheryl and Steven GarfinΔ • Norman and Patricia Gillespie • Doug Gillingham and Dana FrieaufΔ • Diana R. Glimm • Mr. William and Dr. Susan Glockner • Geraldo and Scarrain Gomes Fund • Louise and Doug GoodmanΔ • Gayle and Dwight GordonΔ • William and Natalie GoreΔ • Mary Haviland • Liz and Gary Helming • Phil and Kathy Henry • Jamie Henson and Robert HouskeeperΔ • Higgs Fletcher & Mack, LLP • Ken and Shirley Hinkley • Peggy and John Holl • Bruce and Jane HopkinsΔ • Dana Hosseini and Stacie YoungΔ • Martin and Susan HupkaΔ • Stephanie and Carl Hurst • Ikizyan FamilyΔ • Joe and Phyl Ironworks • Christie IversonΔ • Brad JacobsenΔ • Nancy JanusΔ • Dr. Jim Jaranson Fund of The Minneapolis Foundation • Jay JeffcoatΔ • Dr. and Mrs. Clyde* W. Jones • Janis JonesΔ • Kenneth and Marilyn JonesΔ • Oskar and Judith KirstenΔ • Julie Klaus • La Jolla Kiwanis Foundation • Michael and Teresa Lewis • Friends and Family of Michael Reynolds • Eric and Lori LongstreetΔ • Louis Vuitton • Robin B. LubyΔ • Jain Malkin • Jasna Markovac and Gary Miller • Eileen A. MasonΔ • Joan McAfeeΔ • Robert McCommins • Dennis A. McConnellΔ • Robert and Leslie MercadoΔ • Mike Merrill and Pamela Maudsley-MerrillΔ • Nathan Meyers and Vicki RighettiniΔ • Rena Minisi and Rich PaulΔ • Ursula and Hans Moede • Chuck and Angela MolΔ • Daryl NeesΔ • Lyn Nelson • Joan and Charles NeumannΔ • Ronald J. Newell • Michael and Linda Niggli • Barbara and David NoonanΔ • Mikki NooneyΔ • William and Catherine NorcrossΔ • Mary NorwoodΔ • Rich and June NygaardΔ • Kimberly and David OhanianΔ • Linda and Larry OkminΔ • Micki Olin and Reid Abrams • Dr. David and Elizabeth Ostrander • Barbara OswaldΔ • Christopher and Susan Pantaleoni • John and Diane ParksΔ • Lori Partrick • In memory of Margaret Peninger • Magdalena PulhamΔ • Kathleen and Cameron Jay Rains • Susan Reynolds and Allison RossettΔ • Drs. Andrew Ries and Vivian ReznikΔ • Michael Robertson and Dale Johnston • Steven RossΔ • Lynne and Glenn RossmanΔ • Mary Ann Rowan and Drew SpragueΔ • Robert Rubenstein and Marie Raftery • Arthur N. Rupe FoundationΔ • Galit RyanΔ • Denis and Kristine SalmonΔ • Susan SaltΔ • Rich and Christy Scannell • Rhonda and Scott Schmid • Kathy SchneiderΔ • Karen Sedgwick • Susan B. ShurinΔ • The Silver FamilyΔ • Susan and Gerald SlavetΔ • Steve Steinke • Dr. Craig and Debbie StevensonΔ • Lisa StriebingΔ • Ronald and Susan StynΔ • Miriam and Gene SummΔ • John and Margery SwansonΔ • Clifford and Kay Sweet • Phyllis TachcoΔ • John and Gail TauscherΔ • Anne TaylorΔ • Thomas Templeton and Mary E. ErlenbornΔ • Casey and Julie Tibbitts • Barry and Christine TobiasΔ • Mike Tristani and David UrbanΔ • Natalie C. Venezia and Paul A. Sager • Karen Walker • Peter and Denise Walsh • The Ward Family Charitable FundΔ • The Samuel L. Westerman FoundationΔ • Sandy Wichelecki and Suzanne DukesΔ • Dennis and Carol Wilson • The Witz FamilyΔ • Joseph and Mary Witztum • Robert and Deborah Young • Sandra and Peter Zarcades • Howard and Christy Zatkina • Helene and Allan Ziman Fund of the Jewish Community Foundation • Anonymous (13)Δ

Advocate (\$500 to \$999)

Margaret and Tony Acampora • Robin Allgren • Debra and Dave AlpertΔ • Arleene Antin and Leonard OzerkisΔ • Lynell Antrim • Julie Aquino • Tony and Kathy ArcieroΔ • Assaf Family Fund • Axel Coaching, LLC • Drs. Andrew Baird and Linda HillΔ • Ed Baize and Anna Giacconi • Mike Bannan • Francis and Linda Bardsley • Edgar and Julie BernerΔ • Mrs. Lazare F. BernhardΔ • Steven BertizΔ • Giovanni and Carolyn Bertussi • Sheila Bhalla • Charles and Charlotte Bird • Mary Anne BixbyΔ • Bob and Joyce Blumberg • Robert S. Boltax, M.D.Δ • Sandra BoylesΔ • Deb and Brand Brickman • Demetri and Ann Brizolis • Marshall and Marilyn BrownΔ • Beth Bruton • Christian and Bridget BuckleyΔ • Luc Cayet and Anne Marie PleskaΔ • Jean ChengΔ • Ms. Lisa Churchill and Dr. Susan Forsburg • Phillip Cole, M.D. and Christopher Morris • Will and Lisette Conner • Steve Kelly and Maryanne CordahlΔ • Ginny Corrente • Jerry and Leslie Coughlan • Royda Crosland • John and Michelle Dannecker • Dewey and Cindy DasherΔ • Linda DaviesΔ • Steve and Susan DavisΔ • Caroline DeMarΔ • Don and Julie DeMentΔ • Heather and Michael Dietsch • Hon. Vincent Di Figlia • Donna DonatiΔ • Mary DragooΔ • Sylvie Drake JurrasΔ • Lisa DuMoltΔ • Bill EadieΔ • Gary and Rachel EdwardsΔ • Bernard J. Eggertsen and Florence Nemkov* • Aileen and Dan EmerΔ • Eric Emont and Barbara Snyder EmontΔ • Nate and Margaret Englund • James and Louise EspositoΔ • Elena FederzoniΔ • George Fern • Amy and Stephen ForrestΔ • Susan FoxΔ • Judith and Dr. William FriedelΔ • Catherine R. FriedmanΔ • David GarciaΔ • Harriet GerzaΔ • J. M. GillmanΔ • Cameron and Rachel GlibertΔ • Kelli GloverΔ • Kathe GoldbergΔ • Marjorie Boll GoldbergΔ • Euvoughn Louise Greenan • Melvin Gregory and Carmel MyersΔ • Ellen GrossΔ • Maria Guasp and Richard SperoΔ • Robert Halleck and Della Janis • Ilse HanningΔ • Debra HarrisΔ • Robert HaskellΔ • Salah HassaneinΔ • Tom and Lynn HawkinsΔ • Brent and Dina HelbigΔ • Jill and Steve HerboldΔ • Sarah and Chris HerrΔ • Kate Herring • Suzanne HessΔ • Sara HickmannΔ • Robert and Sabine Hildebrand • James and Cathy Hirsch • Dr. and Mrs. Geoffrey HueterΔ • Katherine ImmermanΔ • Craig and Kim JacobsΔ • Dr. Steven Jaeger and Joe Zilvinskis • Daniel JaquezΔ • Sylvia Johnson • Simone KanterΔ • Barbara Karpinski • Mike and Carol KearneyΔ • Wilfred Kearse and Lynn Champagne • Paul KellyΔ • Dr. Gerald and Barbara Kent • Dorothy and Robert KnoxΔ • Michael and Cynthia KohnΔ • Betty and Dr. Leonard KornreichΔ • Dan and Maria Lai • Laura LandauΔ • Mary R. LimogesΔ • Ron and Gaye LingleyΔ • Diana LongΔ • Michelle LongtinΔ • Robert Lundy • in memory of Dr. David Lynn • Rob McDonald and Tad Bratten • Neil Malmquist • Jeanne MalteseΔ • Chana and Frank MannenΔ • Julianne MarkowΔ • Scott MarkusΔ • Casey and Meridith MarquisΔ • John MartinΔ • Kelly MartinezΔ • Timothy MasonΔ • Rev. Stephen J. Mather • Kevin and Carol McCarthyΔ • Ronald McCaskill and Robyn Rogers • Larry McDonald and Clare White-McDonaldΔ • Nancy McFarlandΔ • Cynthia McIntyreΔ • Maggi McKerrowΔ • Monica Medina ♥Δ • Jeanie and James Milliken • Martha and Chuck MoffettΔ • Craig and Betsey MonsellΔ • Thomas MooreΔ • JR MorganΔ • Dr. Robert and Ms. Anne Morrison • Charles and Susan Muha • Maria and Charles Nagy • Mark NashΔ • Trey and Carla Nolan • Noelle Norton and Erwin WillisΔ • Nancy Cannon-O'ConnellΔ • Thomas and Tanya O'Donnell • Ben Olson • Stephen and Judy O'NeillΔ • Dianna OrthΔ • Carol Pastor • Virginia PatchΔ • Alexandra Pearson and Paul MeschlerΔ • Pat and Evelyn PhillipsΔ • Mr. and Mrs. Jon Pollock • Eve PritchardΔ • San Diego Project Heart Beat • Paul and Jody PucciΔ • Adele RabinΔ • Bruce Ramet • Gene and Taffin RayΔ • Sandra Redman • Leslie ReedΔ • The Regnery Family TrustΔ • Christy and Rich RileyΔ • Robert Roberto • Tom and Mary RobertsΔ • Bingo and Gino RoncelliΔ • Joy Rottenstein • Sheryl Rowling • Dr. Norman and Barbara RozanskyΔ • Don and Cynthia RushingΔ • Mr. and Mrs. Todd Ruth • San Diego Performing Arts LeagueΔ • Barbara A. SawreyΔ • Robert J. Schott • Martin* and Connie Schroeder • Estate of Daniel L. Schwarz • Linda and Harold Scott • Tim Serlet and Luci Romero Serlet • Natalie H. ServiceΔ • Michele and John ShumateΔ • Beverly and Howard SilldorfΔ • Anne and Ronald Simon • Lance SmithΔ • Lupe SmithΔ • Malcolm E. Smith • Dr. Carol Harter and Mr. William Smith • Elyse SollenderΔ • Norman and Judith Solomon • Marisa SorBello and Peter V. Czipott • John and Lynn SpaffordΔ • Shannon SpisakΔ • Peter Stovin • Stephen StrawbridgeΔ • Eric and Marian SuggsΔ • Dan and Katie SullivanΔ • Enrique TorresΔ • Selma TorresΔ • Todd and Susan TurnerΔ • Ginny UnanueΔ • Hannah Van EttenΔ • Gladfred VieryΔ • Aaron and Jennifer WahlΔ • Anne WalterΔ • Ann W. WangΔ • Ken and Susan WatsonΔ • Pam and Steve WedelΔ • Janis WellbergΔ • Corky and Joyce WhartonΔ • Diane WillianΔ • Andrew and Carisa Wisniewski • Cass Witkowski Family • Chuck and Curry WolfeΔ • Bonnie J. Wright • Mr. and Mrs.* C.E. Wylie/C.E. Wylie Construction Company • Brendan M. and Kaye I. Wynne • Earl and Judy YagerΔ • Anonymous (18)Δ

For our full list of donors, please visit www.TheOldGlobe.org/Donors.

*In memoriam
♥Globe Sustainers: donors who have pledged multiyear gifts
ΔGlobeRISING Supporters: donors who supported the Globe during closure

This list is current as of September 1, 2021.

We regret any omissions or errors. Please contact Janet Myott at jmyott@TheOldGlobe.org to make a correction to this list.

Fredome Bradley-Ballentine · Director of Arts Engagement and Associate Artistic Director
Llewellyn Crain · Director of Philanthropy
Robert Drake · Senior Producer
Dave Henson · Director of Marketing and Communications
Sandy Parde · Director of Human Resources
Jesse Perez · Director of Professional Training
Michelle Yeager · Director of Finance

ARTISTIC

Fredome Bradley-Ballentine, Justin Waldman · Associate Artistic Directors
Danielle Mages Amato · Literary Manager/Dramaturg
Kim Heil, Lamar Perry · Associate Producers

PRODUCTION

Benjamin Thoron · Production Manager
Leila Knox · Associate Production Manager and Production Stage Manager
Debra Pratt Ballard · Producing Associate
Ron Cooling · Company Manager
Jennifer Watts · Associate Company Manager
Jerilyn Hammerstrom · Production Office Coordinator

TECHNICAL

Joe Powell · Technical Director
Lucas Skoug, Adina Weinig · Assistant Technical Directors
Carole Payette · Charge Scenic Artist
Eileen McCann · Resident Design Assistant
Diana Rendon · Scene Shop Buyer
Gillian Kelleher · Head Shop Carpenter
Jason Chohon · Charge Carpenter, White
Brandon Resenbeck · Stage Carpenter/Head Rigger, Globe
Curtis Carlsteen, Chris Chauvet, Keri Ciesielski, Sloan Holly, Christopher Rowe, Albert Rubidoux, Mark Soares, Evelyn Walker · Carpenters
Francisco Ramirez · Scene Shop Operations Assistant
W. Adam Bernard, Torrey Hyman · Lead Scenic Artists
Jessica Amador · Scenic Artist

COSTUMES

Stacy Sutton · Costume Director
Charlotte Devaux Shields · Resident Design Associate
Shelly Williams · Design Assistant/Shopper
Katie Knox · Design Assistant
Erin Cass · Draper
Ingrid Helton · Draper/Tailor
Allison McCann, Sharon Granieri, Susan Sachs, Nicole Sukolics Christianson, Abigail Zielke · Assistant Cutters
Nunzia Pecoraro, Heather Premo · Stitchers
Kristin Womble · Craft Supervisor/Dyer/Painter
Faith A. James · Craft Artisan
Alison Reyes · Wig and Makeup Supervisor
Megan Woodley · Assistant Wig and Makeup Supervisor
Stephanie Kwik · Wig Assistant
Beth Merriman · Wardrobe Supervisor
Kelly Marie Collett-Sarmiento · Wardrobe Crew Chief, Globe
Jazmine Choi · Lead Wig Runner
Natalie Barshow, Terrie Cassidy, Sunny Haines, Chanel Mahoney, Raven Winter · Wardrobe Crew, Globe
Anna Campbell · Wardrobe Crew Chief, White
Stephanie Castro · Wardrobe Swing
Kim Parker · Wig Running Crew Swing
Stephanie Castro · Wardrobe, Globe for All

PROPERTIES

David Buess · Properties Director
Kristin Steva Campbell · Associate Properties Director
Savannah Moore · Properties Buyer
Rory Murphy · Head Properties Artisan
Jacob Sampson · Prop Shop Foreperson
Kyle Melton · Lead Properties Carpenter
Suzi McDonnell · Head Properties, Globe
Richard Rossi · Stage and Properties Head, White

Jeffery Rocky, Annelise Rowe · Properties Artisans
Kendell Northrup, Val Philyaw, James Ramirez · Run Crew
Tonieogue · Run Crew Swing

LIGHTING

Stevie Agnew · Lighting Director
Stephanie Lasater · Assistant Lighting Director
Deanna Trethewey · Lighting Assistant
Ryan Osborn · Head Electrician, Globe
Michael Lowe · Head Electrician, White
Sean Murray · Head Electrician, Festival
Mike Adams, Michelle Aguilar, Jessica Dean, Ariel George, Xavier Luevano, Finn Marlarky, Delaney McCown, Sandra Navarro, Kevin Orlof, Aaron Pavlica, Samuel Rodriguez, Robert Thoman, Aiko Whitmore, Laura Zingle · Electricians

SOUND

Paul Peterson · Sound Director
Evan Eason · Assistant to the Sound Director
Colin Whitely · Head Sound Technician, Globe
Matt Lescault-Wood · Head Sound Technician, White
Brooke Rains · Deck Audio, Globe
John Jackson · Head Sound Technician, Globe for All
Rachel Eaves, Clayton Nicodemus, Zac Ordene, Tanner Osborne, Robbie Welper · Sound Technicians
Jennifer Lopez · Audio Swing

HUMAN RESOURCES

Bruna Duarte · Human Resources Generalist

GENERAL MANAGEMENT

Alexandra Hisserich · Associate General Manager
Jeff Sims · Assistant General Manager
Andrea Fernández · COVID Compliance Officer
Carolyn Budd · Assistant to the Artistic and Managing Directors
Tim Cole · Receptionist

FACILITIES

Crescent Jakubs · Facilities Director
Johnny Kammerer · Custodial Supervisor
Beverly Boyd, James Coleman, Violana Corona, Roberto Gonzalez, Bernardo Holloway, Carolina Lopez de Orellana, Nancy C. Orellana Lopez, Jason McNabb, Victor Quiroz, Vicente Ramos, Andrey Repetskiy · Building Staff

INFORMATION TECHNOLOGY

Dean Yager · Information Technology Director
Justin Brown · Systems Administrator
Brittany Summers · Information Technology Assistant

PATRON SERVICES

Samantha Beckhart, Janelle Conde, Oliver de Luz, Martin Dominguez, Allison Dorantes, Karen Lefferts, Laura Rodriguez, Mary Taylor, Victoria Weller · House Managers
Anura Ranasinghe · Front of House Assistant
Barbara Behling, Allison Dorantes, Stephanie Rakowski, Joey Ramone Ugalde · Gift Shop Supervisors

LADY CAROLYN'S PUB

Patrice Aguayo · Pub Manager
Alexis Duran, Scott Fitzpatrick, Deborah Montes, Rashad Williams · Pub Shift Supervisors
Adam Alonso, Marc Eddy, Victoria Escobar, Alejandro Gutierrez, Rachel Hedrick, Daniela Montes, Ryan Ursiny · Pub Staff

PUBLIC SAFETY

Mike Orona · Public Safety Manager
David Hanson · Public Safety Supervisor
Vincent Bisazza, Willie Caldwell, Kenneth Gallanosa, Janelle Hinds, Janet Larson, Eleuterio Ramos, Andrew Vargas · Public Safety Team

PROFESSIONAL TRAINING

Shana Wride · Program Coordinator
Danielle Mages Amato, Amanda Penaloza Banks, Ray Chambers, Gerhard Gessner, Jan Gist, Charles O'Malley, Scott Ripley, Jersten Seralie, Abraham Stoll, James Vásquez, Emmelyn Thayer, Eileen Troberman · M.F.A. Faculty
Corey Johnston, Dana McNeal, Nate Parde, Nicole Ries, Robin Sanford Roberts · M.F.A. Production Staff

ARTS ENGAGEMENT

Katherine Harroff · Associate Director of Arts Engagement
Vietka Do, Lisel Gorell-Getz, Erika Phillips, Laura Zablitz · Arts Engagement Programs Managers
Lisel Gorell-Getz · Education Coordinator
James Pillar · Program Associate
Juliana Gassol · Arts Engagement Operations Coordinator
Alejandra Villanueva · Community Tour Coordinator
Veronica Burgess, Leticia De Anda, Kendrick Dial, Randall Eames, Gerardo Flores Tonella, Samantha Ginn, Kimberly King, Erika Malone, Bibi Mama, Niki Martinez, Jake Millgard, Tara Ricasa, Catherine Hanna Schrock, Jersten Seralie, Arielle Slier, Sharrif Simmons, Gill Sotu, Miki Vale, Valeria Vega, Rio Villa, Eric Weiman · Teaching Artists

FINANCE

Miranda Osguthorpe · Senior Accountant
Trish Guidi · Accounts Payable/Accounting Assistant
Lisa Sanger-Greshko · Accounts Payable/Payroll Assistant
Eugene Landsman · Payroll Administrator

PHILANTHROPY

Kristina Keeler · Deputy Director of Philanthropy
Bridget Cantu Wear · Associate Director of Philanthropy, Legacy Giving
Moneé Gardner · Assistant Director of Philanthropy
Haley Meyer · Events Director
Janet Myott · Philanthropy Administrator
Kaitlin Heller · Senior Grant Writer
Juliana Choi · Grant Writer
Krista Wilford · VIP Services Coordinator
Caren Dufour · Philanthropy Assistant

DONOR SERVICES

Corinne Bagnol, Jyothi Doughman, Michele Kemp, Barbara Lekes, David Owen, Stephanie Reed, Alexander Richards, Barry Rose, Timothy Ton · Suite Concierges

MARKETING

Patty Ognan Consulting · Interim Public Relations Director
Mike Hausberg · Associate Director of Communications
Lucia Serrano · Public Relations Associate
Chanel Cook · Digital and Print Publications Designer
Eve Alita Childs · Marketing Assistant

SUBSCRIPTION SALES

Scott Cooke · Subscription Sales Manager
Catherine Andrews, Arthur Faro, Janet Kavin, Yolanda Moore, Ken Seper, Cassandra Shepard, Jerome Tullmann, Grant Walpole · Subscription Sales Representatives

TICKET SERVICES

Bob Coddington · Ticket Services Director
Marsi Bension · Associate Ticket Services Director
Cristal Salow · Group Sales Manager
Kathy Fineman, Caryn Morgan · Lead Ticket Services Representatives
Manuel Aguilar, Kari Archer, Hannah Frederick, Jessica Holbert, Caroline Hyatt, Taylor Olson, Elizabeth Snell, Nathan Wetter · Ticket Services Representatives

Jack O'Brien · Artistic Director Emeritus
Craig Noel · Founding Director